

BOROUGH OF CHESTER
Highlands Master Plan Element

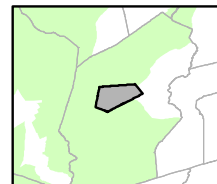
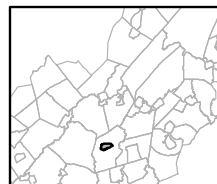
Exhibit A: Chester Borough Highlands Planning Area



Regional Master Plan Overlay Zone Designation

- Zone
- Protection
 - Conservation
 - Existing Community
- Sub-Zone
- Existing Community Environmentally Constrained
 - Conservation Environmentally Constrained
 - Lake Community
 - Wildlife Management
- Lakes Greater Than 10 acres
 - Preservation Area
 - Municipal Boundaries

Chester Borough

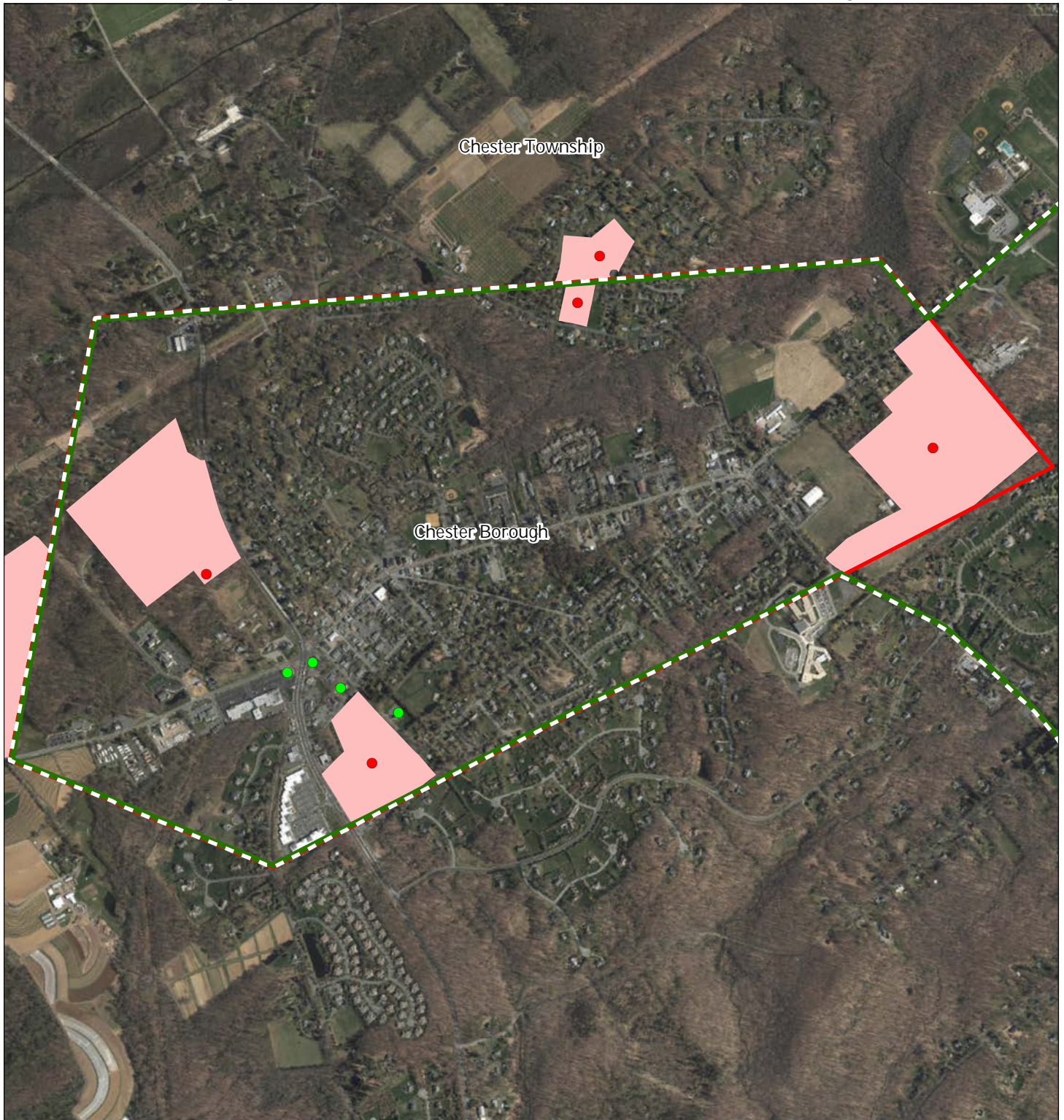


1 inch = 0.261 miles



MAY 2016

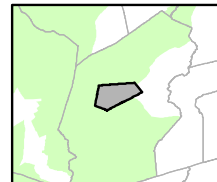
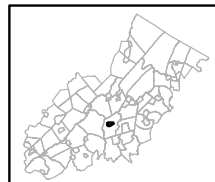
Exhibit C: Highlands Contaminated Sites Inventory



Highlands Contaminated Site Inventory

Chester Borough

- *Tier 1 Sites*
- *Tier 1 Sites (Polygons)*
- *Tier 2 Sites*
- ▬ Preservation Area
- ▬ Municipal Boundaries

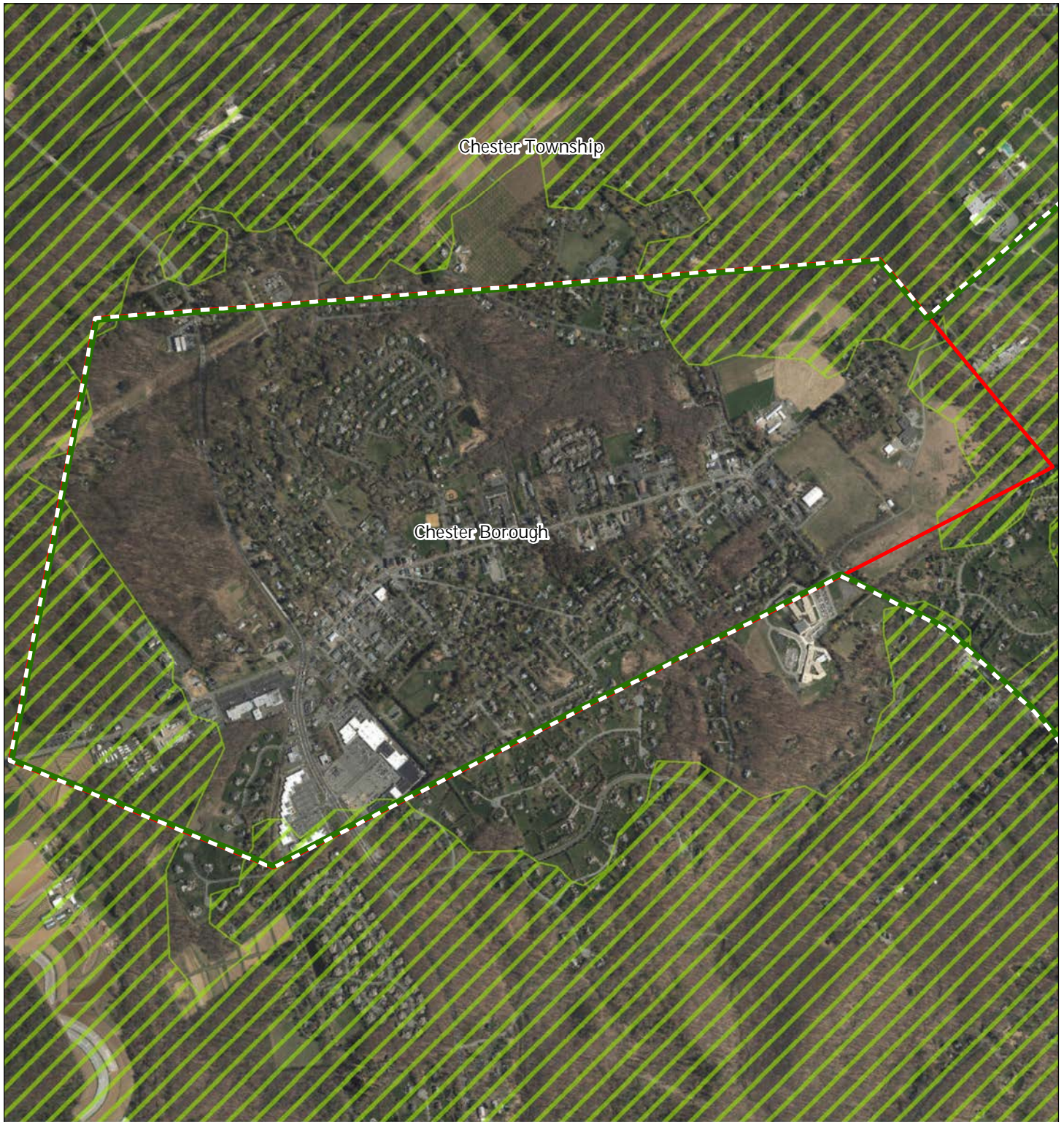





1 inch = 0.261 miles



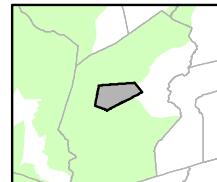
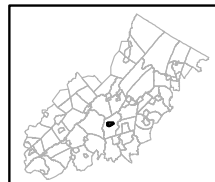
MAY 2016

Exhibit E: Forest Resource Area



-  Forest Resource Area
-  Preservation Area
-  Municipal Boundaries

Chester Borough






1 inch = 0.261 miles



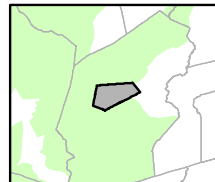
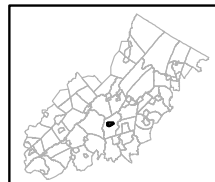
MAY 2016

Exhibit F: Total Forest Area



-  Forested Areas
-  Preservation Area
-  Municipal Boundaries

Chester Borough

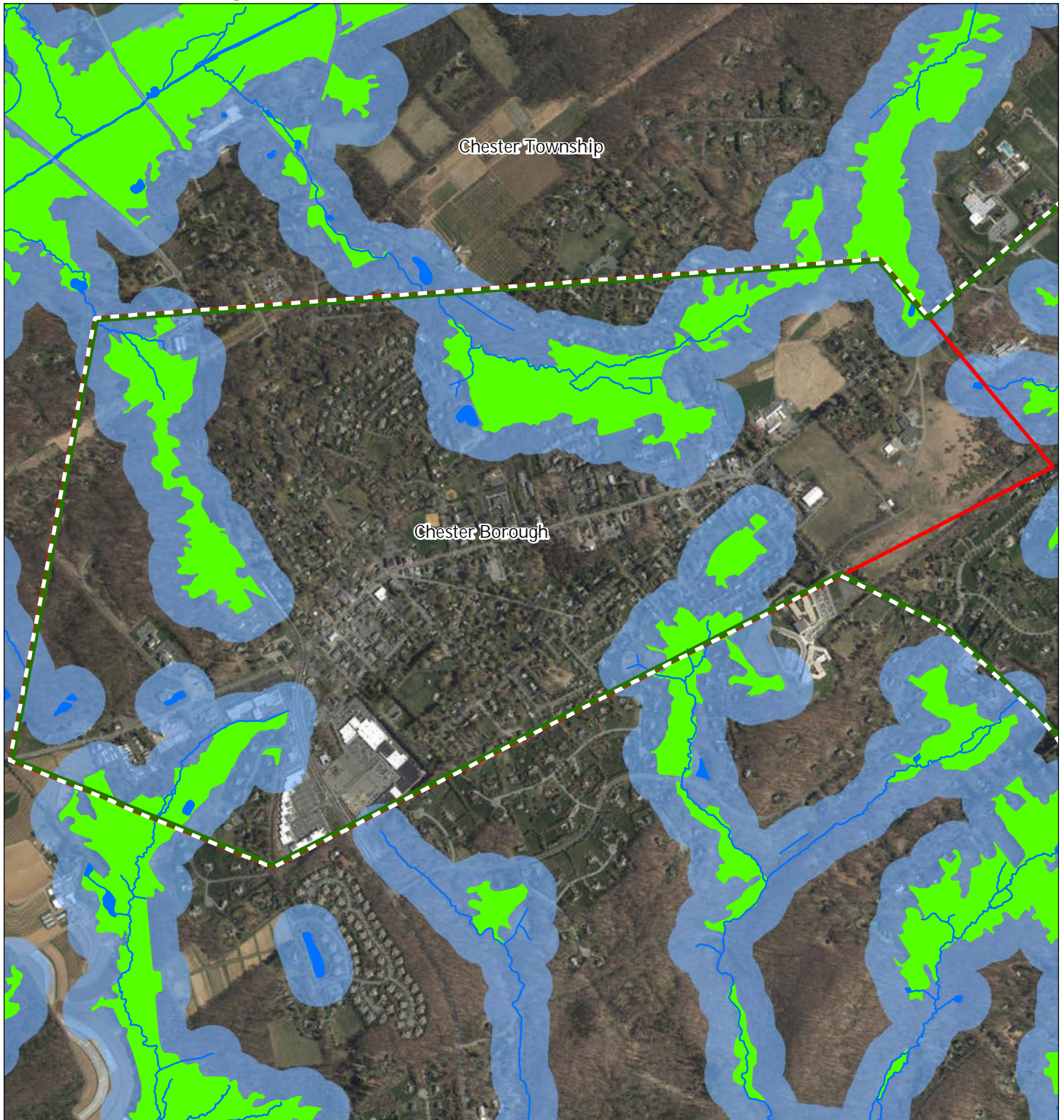



1 inch = 0.261 miles



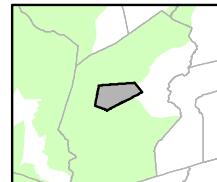
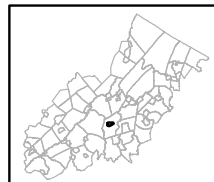
MAY 2016

Exhibit H: Highlands Open Waters



-  Highlands Open Water Buffers (300ft)
-  Streams
-  Wetlands
-  Lakes & Ponds
-  Preservation Area
-  Municipal Boundaries

Chester Borough



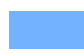


1 inch = 0.261 miles



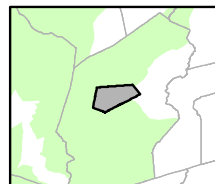
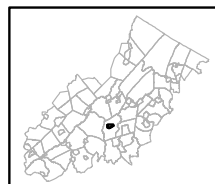
MAY 2016

Exhibit I: Highlands Riparian Areas



-  Riparian Area
-  Preservation Area
-  Municipal Boundaries

Chester Borough

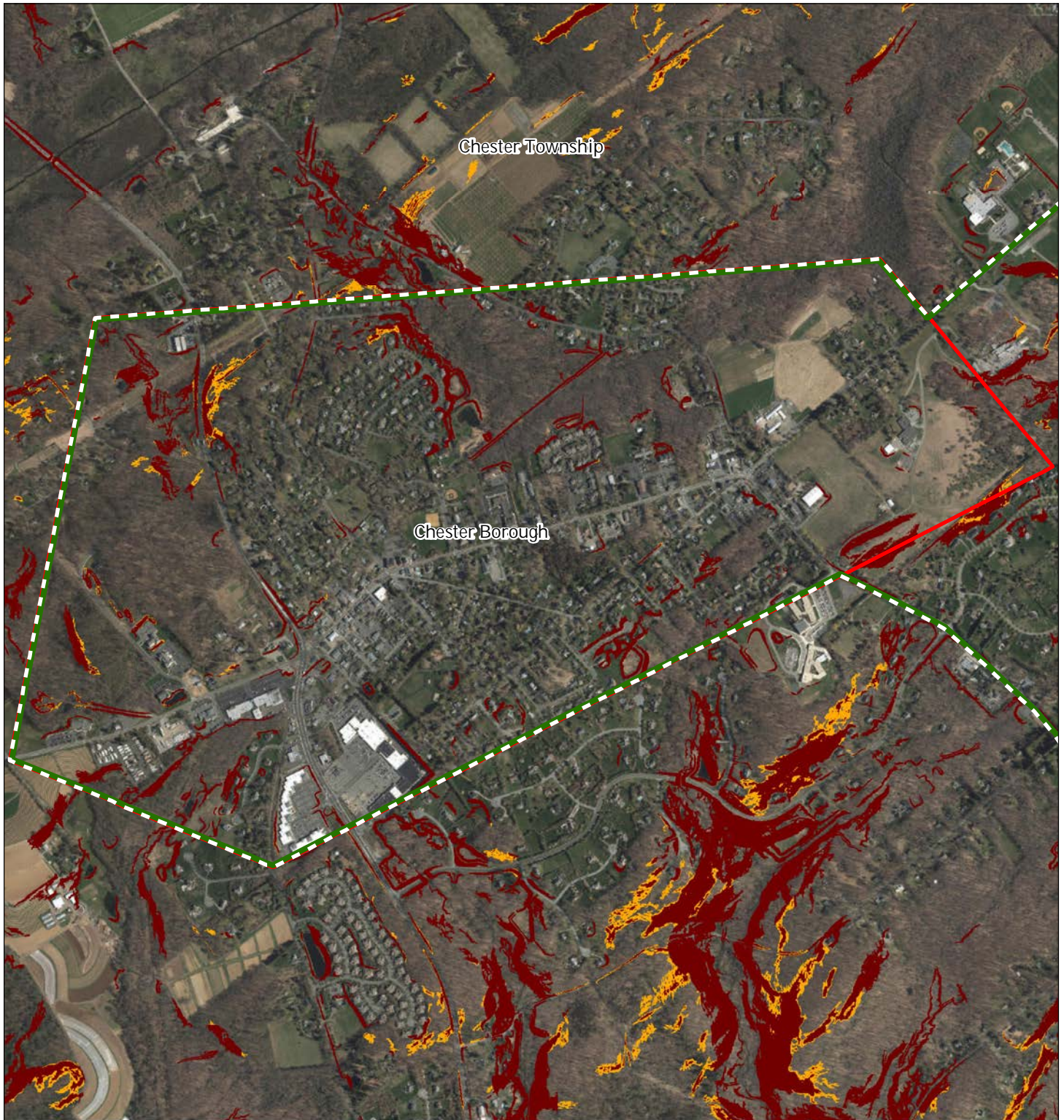


1 inch = 0.261 miles



MAY 2016

Exhibit L: Steep Slope Protection Areas



Steep Slopes

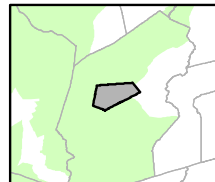
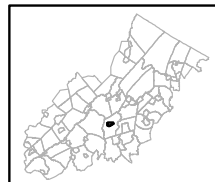
 Moderate

 Severe

 Preservation Area

 Municipal Boundaries

Chester Borough



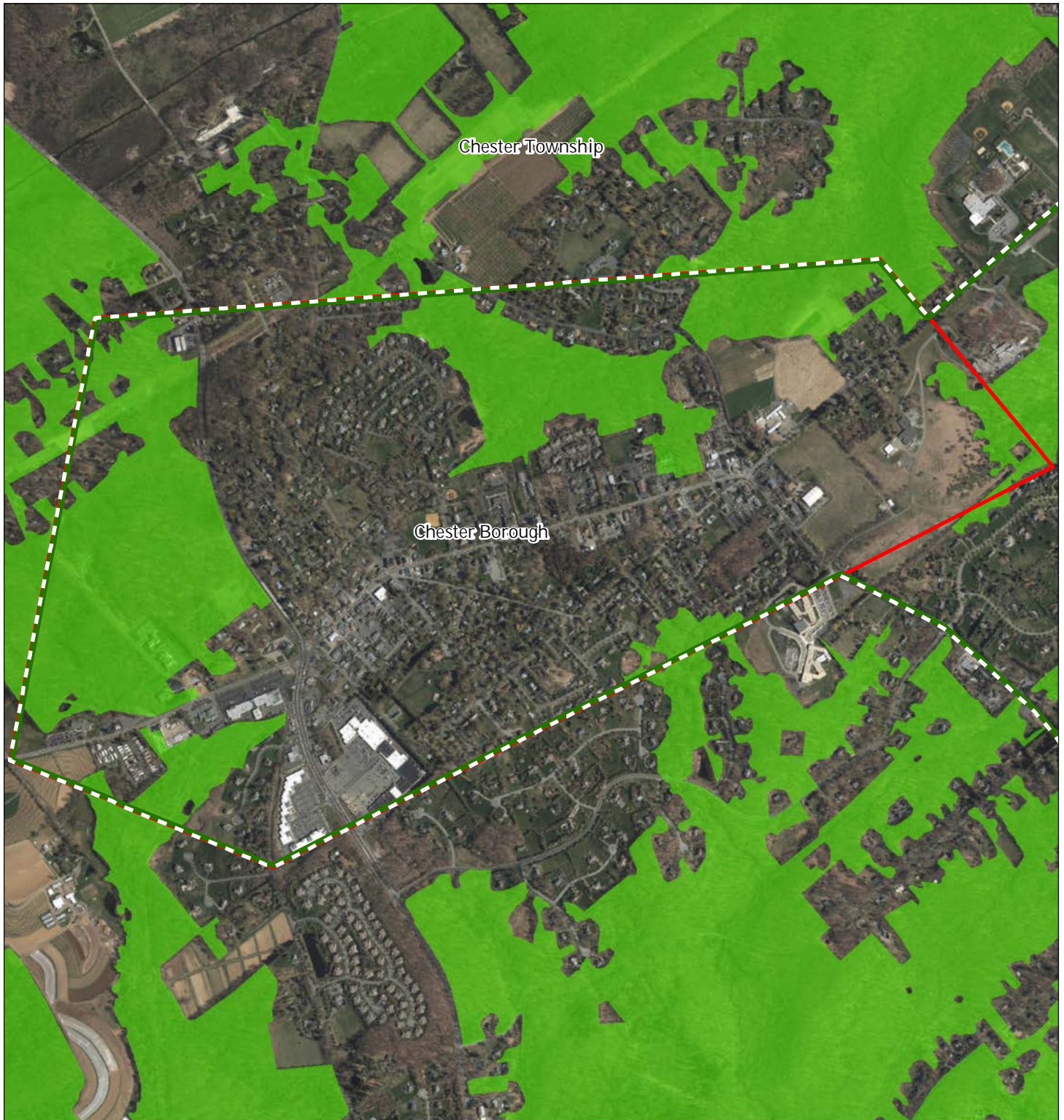
1 inch = 0.261 miles





Highlands Council
New Jersey



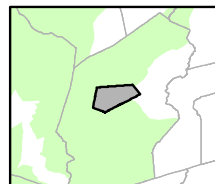
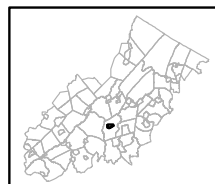
MAY 2016

Exhibit M: Critical Wildlife Habitat



-  Critical Wildlife Habitat
-  Preservation Area
-  Municipal Boundaries

Chester Borough

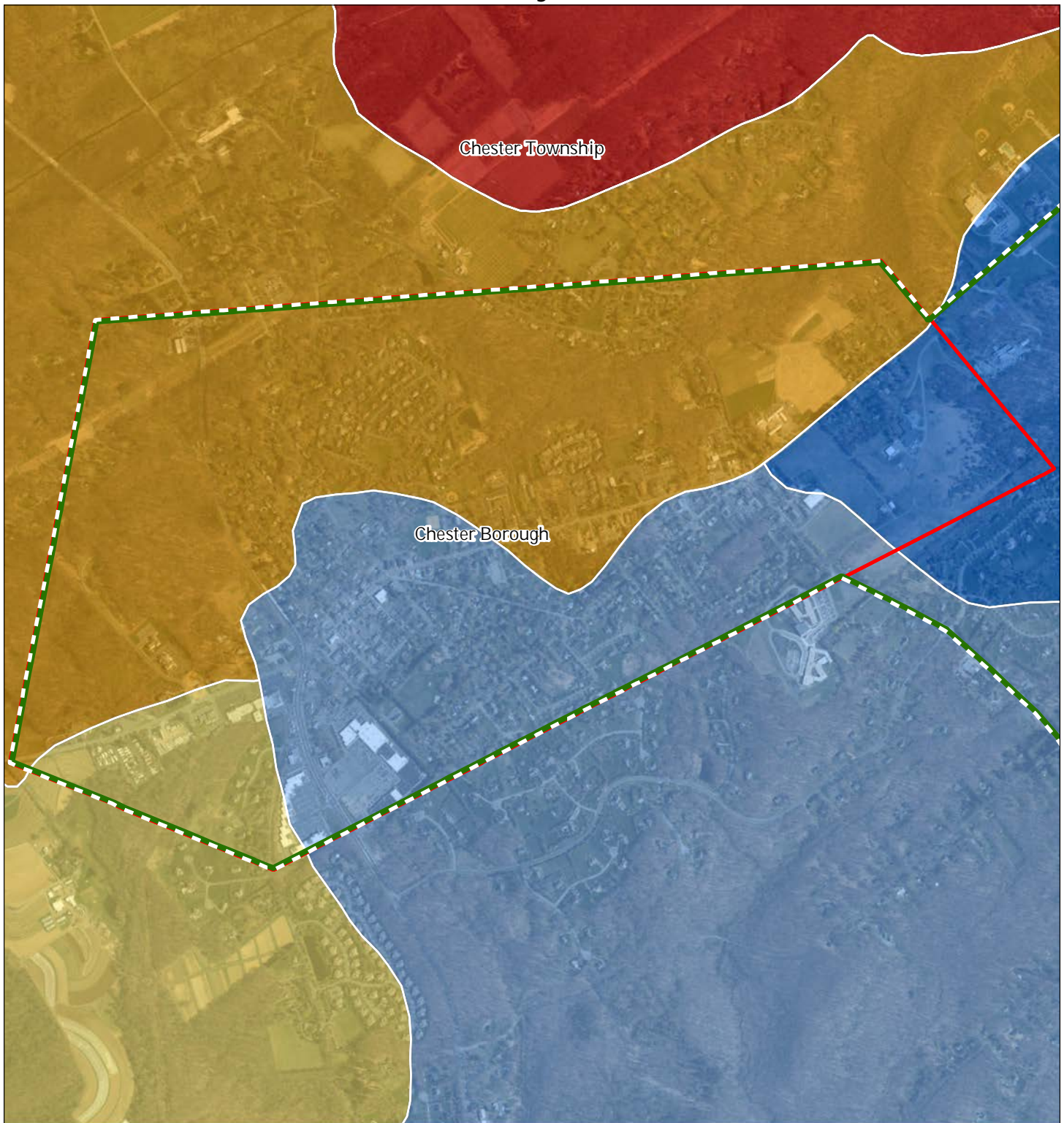


1 inch = 0.261 miles



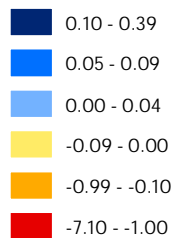
MAY 2016



Exhibit R: Net Water Availability

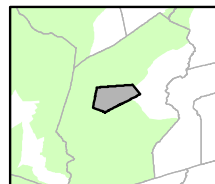
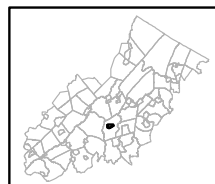


Net Water Availability By HUC14

Million Gallons Per Day (MGD)



 Preservation Area
 Municipal Boundaries



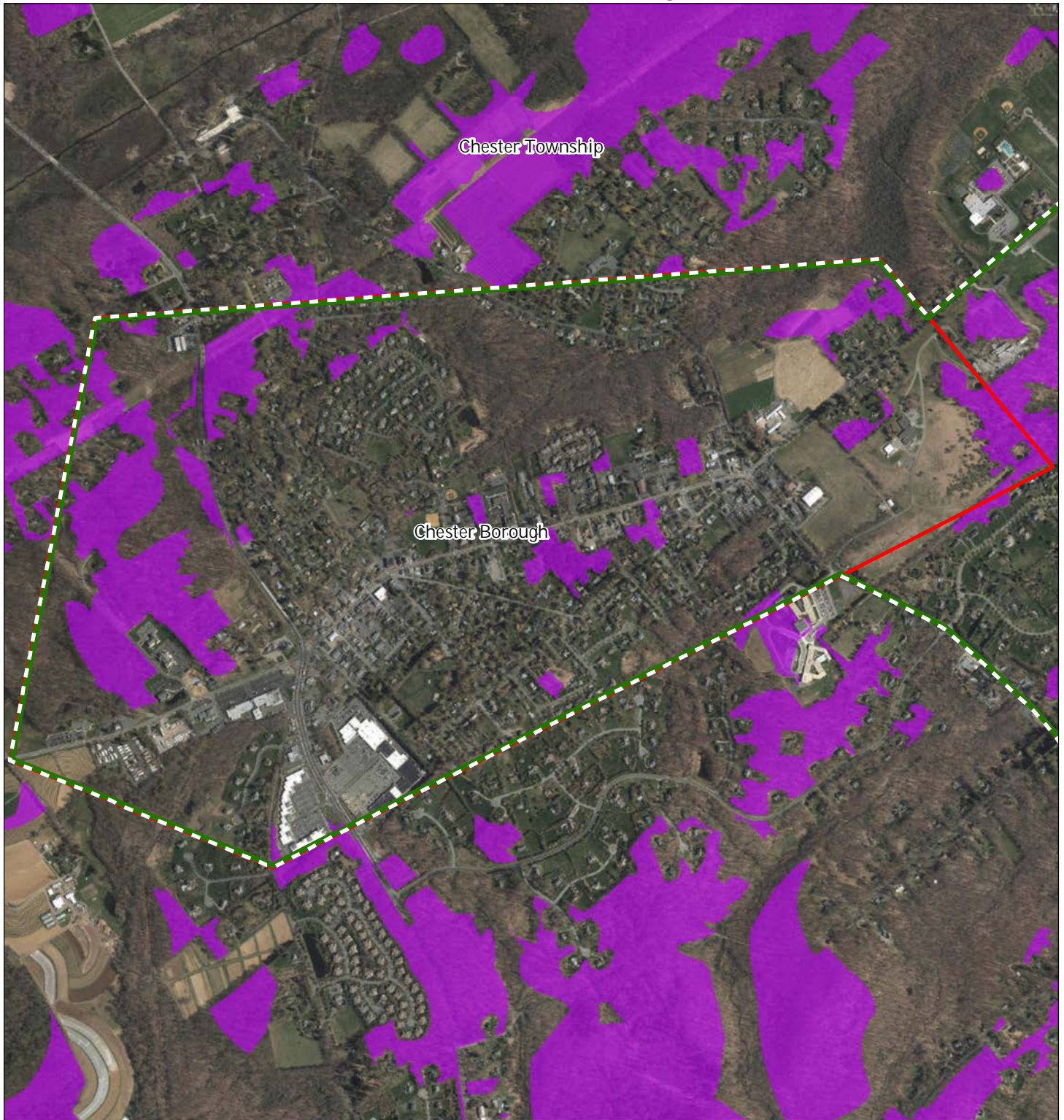
1 inch = 0.261 miles






MAY 2016

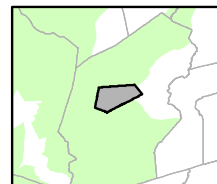
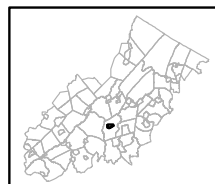
Mahwah Township

Exhibit S: Prime Ground Water Recharge Areas



-  Prime Ground Water Recharge Areas
-  Preservation Area
-  Municipal Boundaries

Chester Borough

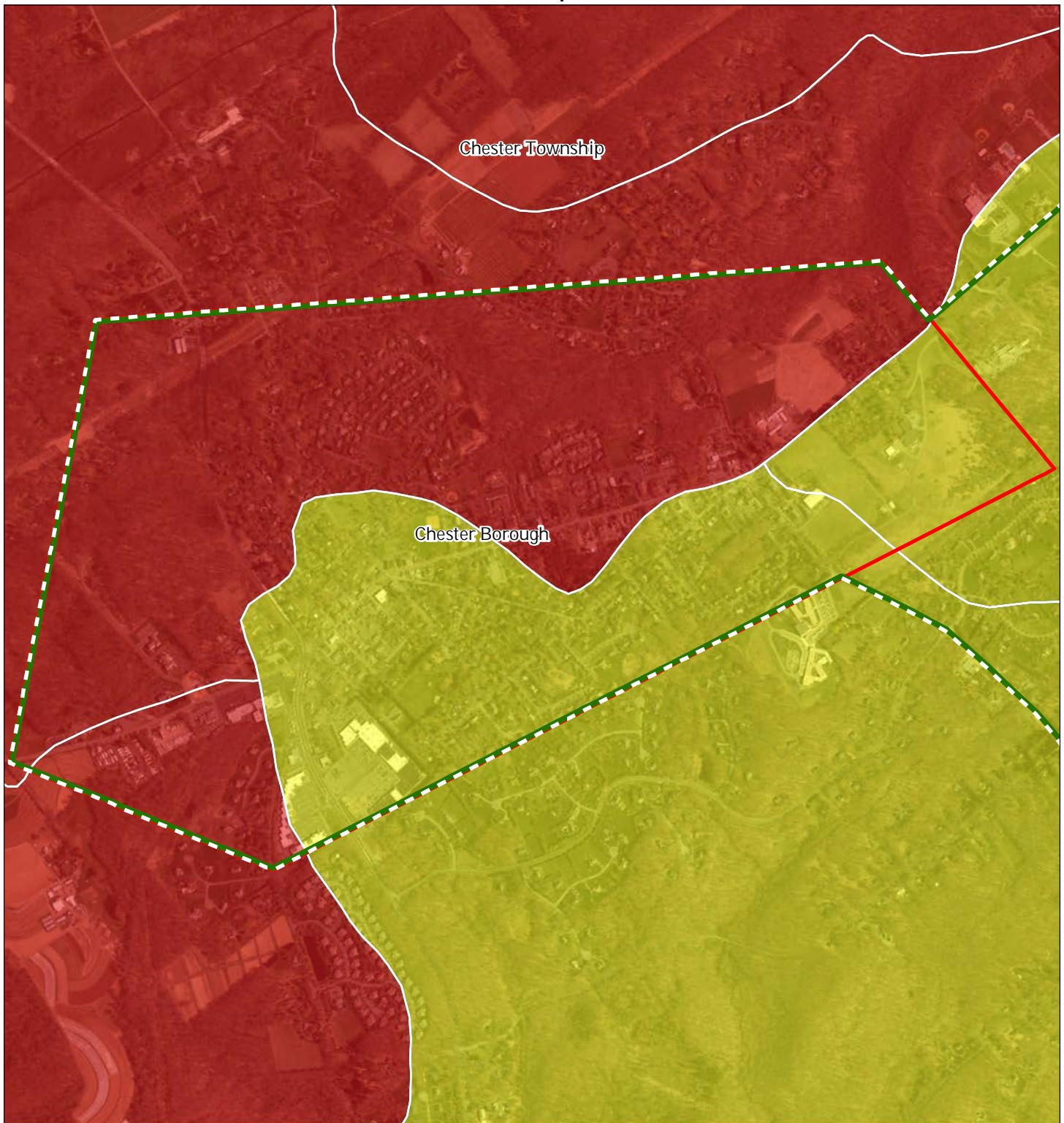


1 inch = 0.261 miles



MAY 2016

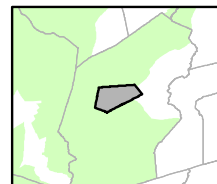
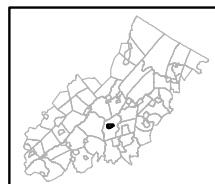
Exhibit T: HUC 14s on NJDEP Impaired Waters List



Impaired Waters Overall Assessment by HUC14 Subwatershed

- Non Impacted*
- Insufficient Data Available*
- Moderate*
- Water Quality Impaired*
- Preservation Area
- Municipal Boundaries

Chester Borough

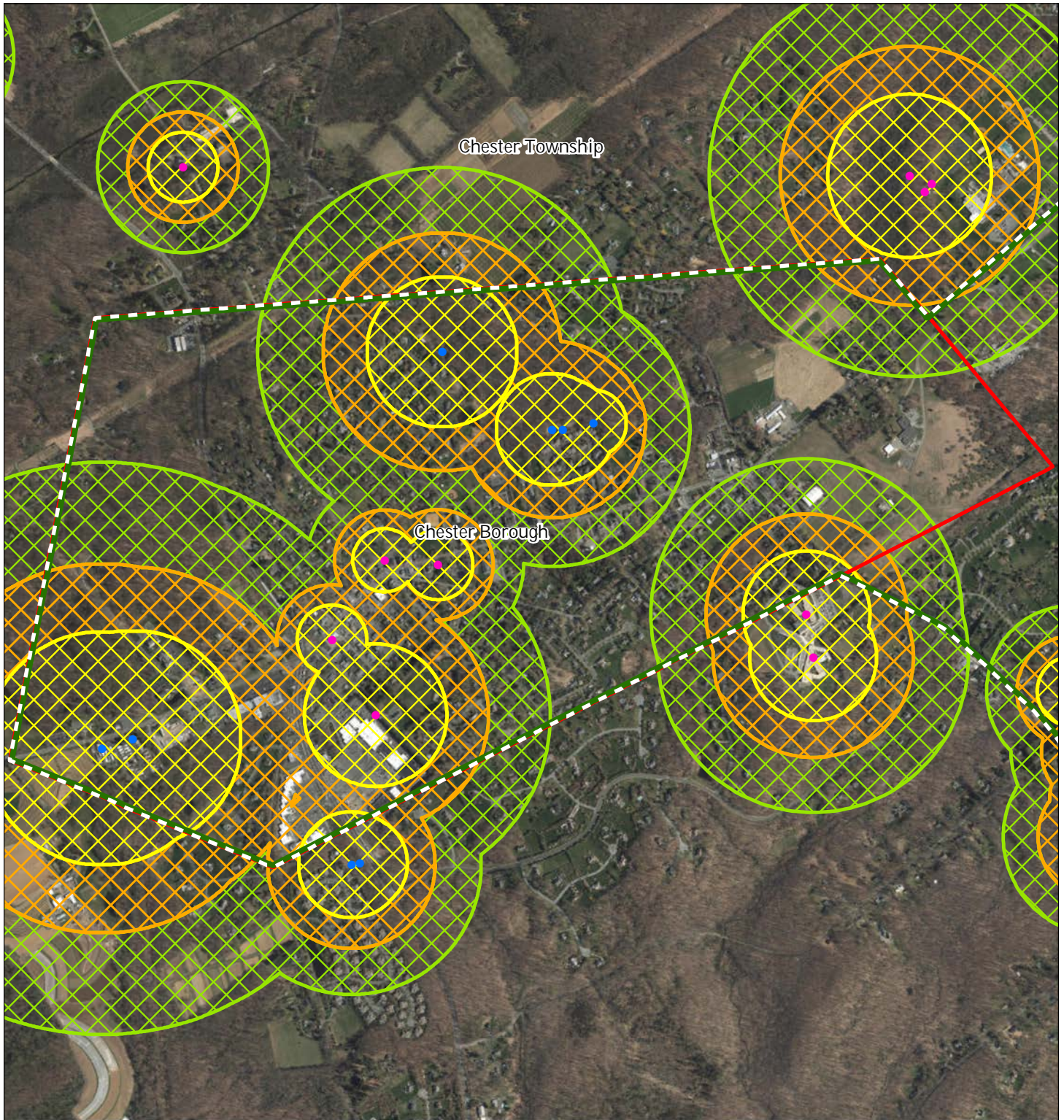


1 inch = 0.261 miles



MAY 2016

Exhibit U: Wellhead Protection Areas



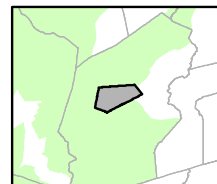
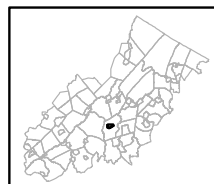
- Public Community Wells
- Public Non-Community Wells

Wellhead Protection Areas

- 2-Year Tier
- 5-Year Tier
- 12-Year Tier

- Preservation Area
- Municipal Boundaries

Chester Borough






1 inch = 0.261 miles



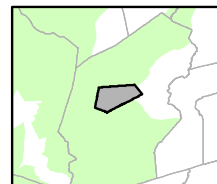
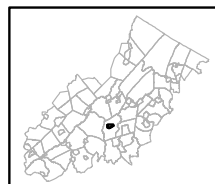
MAY 2016

Exhibit V: Public Community Water Systems



-  Public Community Water Systems
-  Preservation Area
-  Municipal Boundaries

Mahwah Township

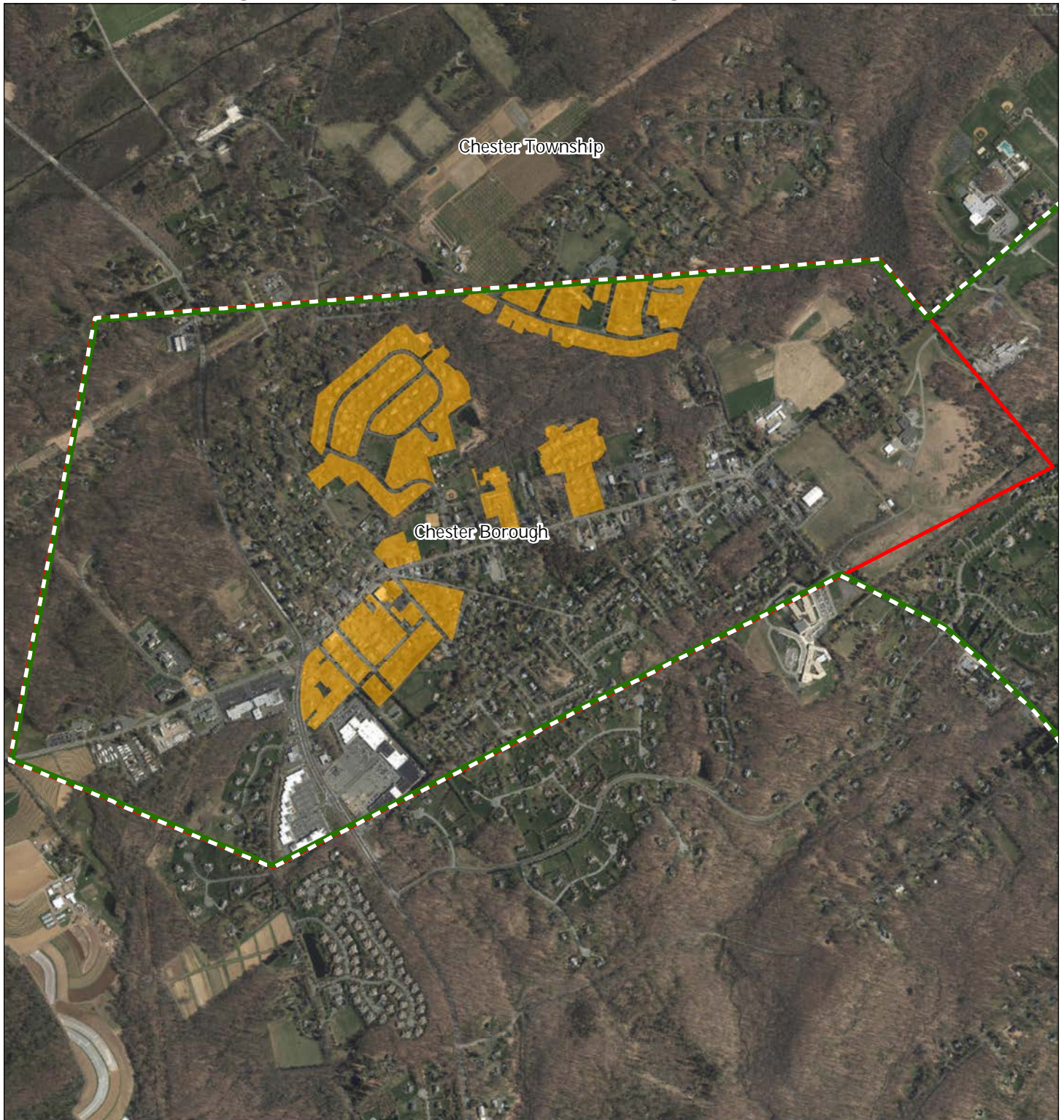


1 inch = 0.261 miles






MAY 2016

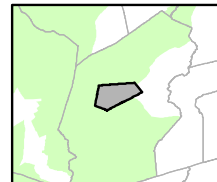
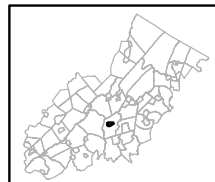
Exhibit W: Highlands Domestic Sewerage Facilities



Highlands Domestic Sewerage Facilities

-  *Existing Area Served*
-  Preservation Area
-  Municipal Boundaries

Chester Borough



1 inch = 0.261 miles



MAY 2016

Exhibit X: Septic System Yield

Figure 1: Municipal Build-out Report Septic System Yield by HUC14 and LUCM Zone *

CHESTER BOROUGH

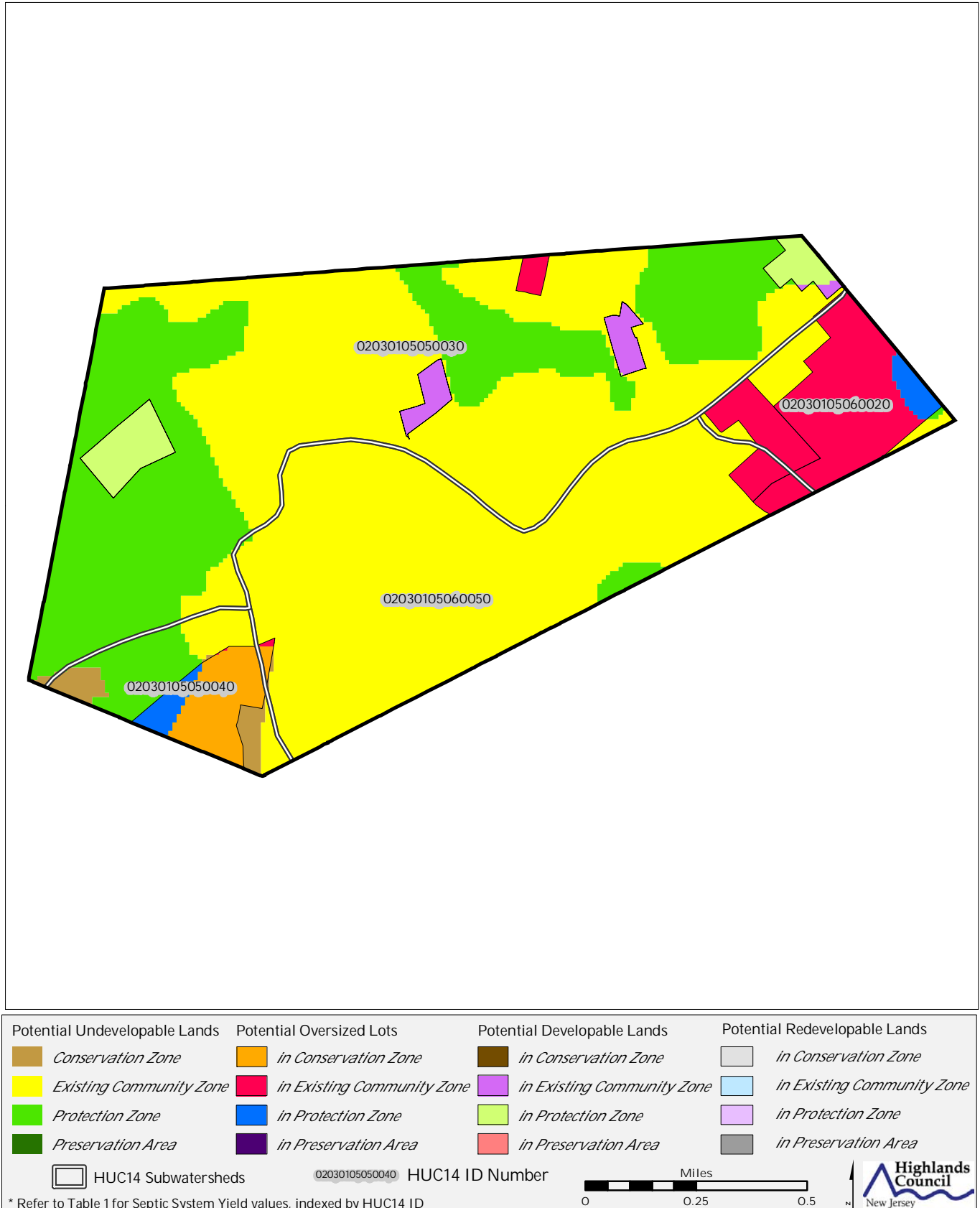
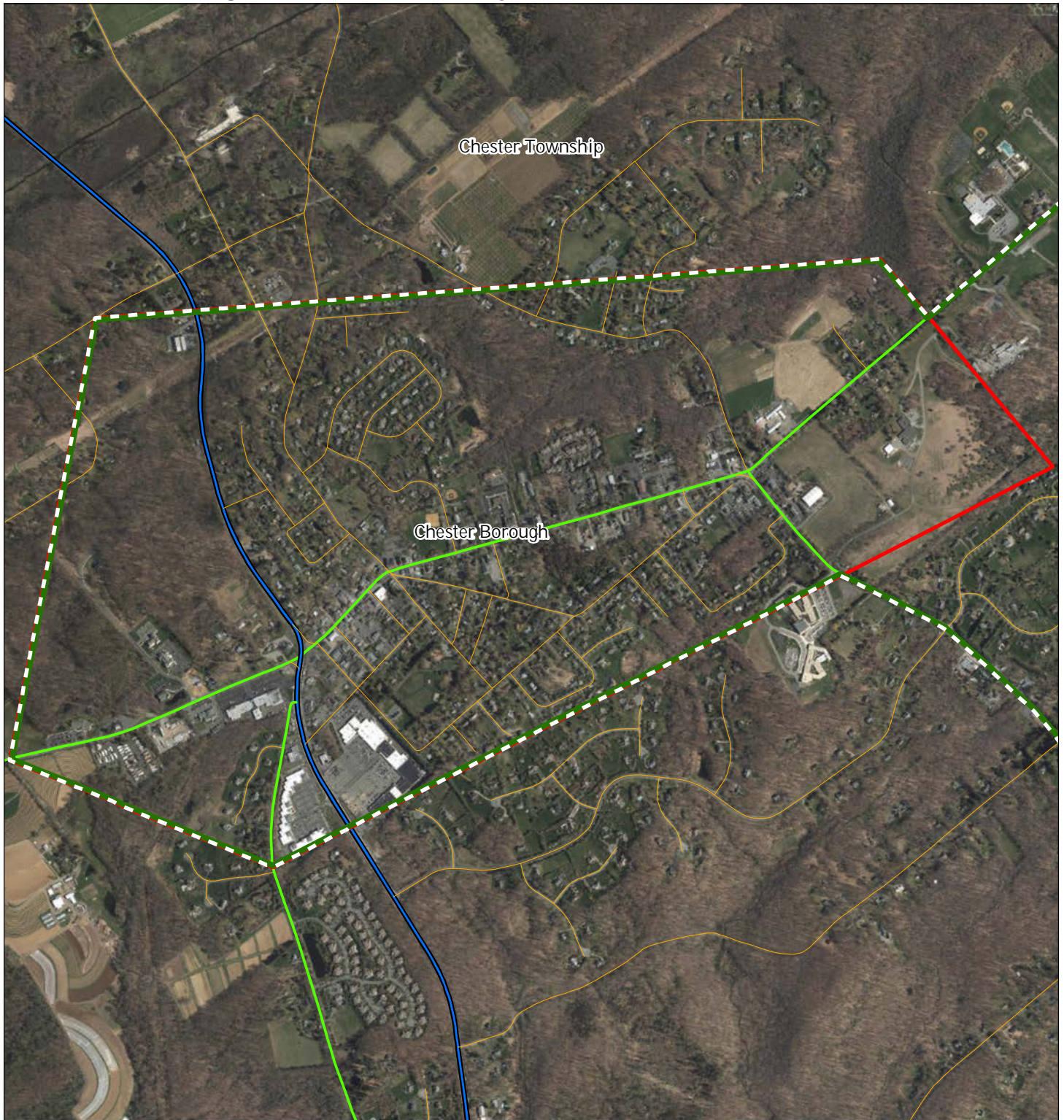


Exhibit Y: Highlands Roadway Network




Roadway Network


 *Interstate Highways*

 *U.S. Routes*

 *State Routes*

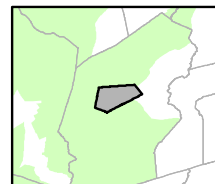
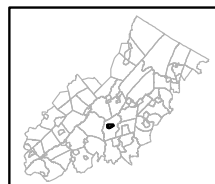
 *County Routes*

 *Local Routes*

 Preservation Area

 Municipal Boundaries

Chester Borough

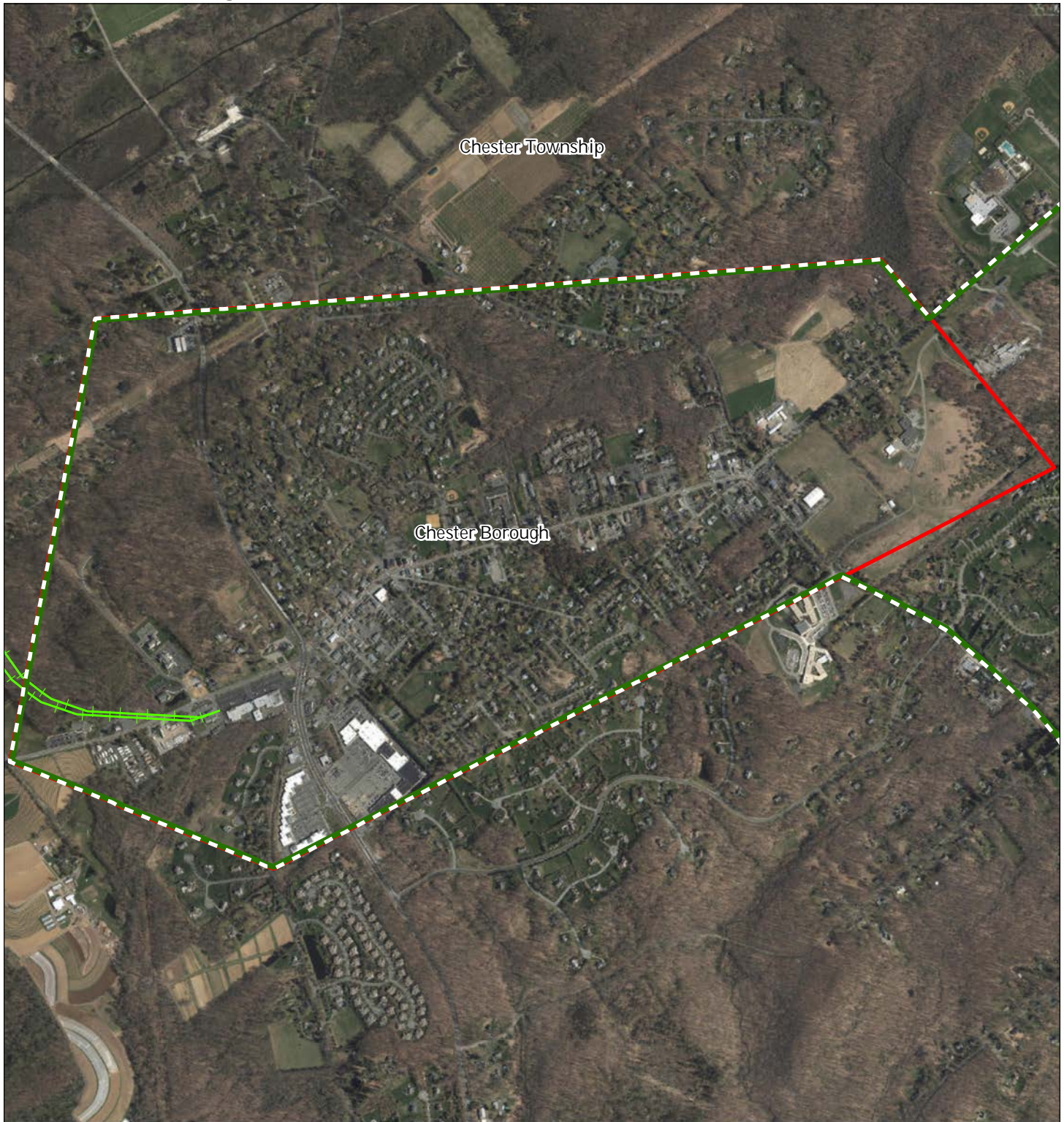


1 inch = 0.261 miles



MAY 2016

Exhibit Z: Highlands Transit Network



Rail Network

Boonton Line

Main Line & Bergen County Line

Morris and Essex Line

Raritan Valley Line

Freight Rail Lines

Freight Rail Lines

Abandoned Freight Rail

Rail Stations

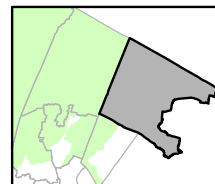
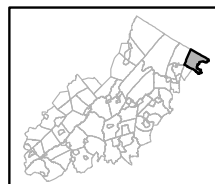
Park and Ride Sites

Private Bus Lines

NJ Transit Bus Lines

Airports

Chester Borough



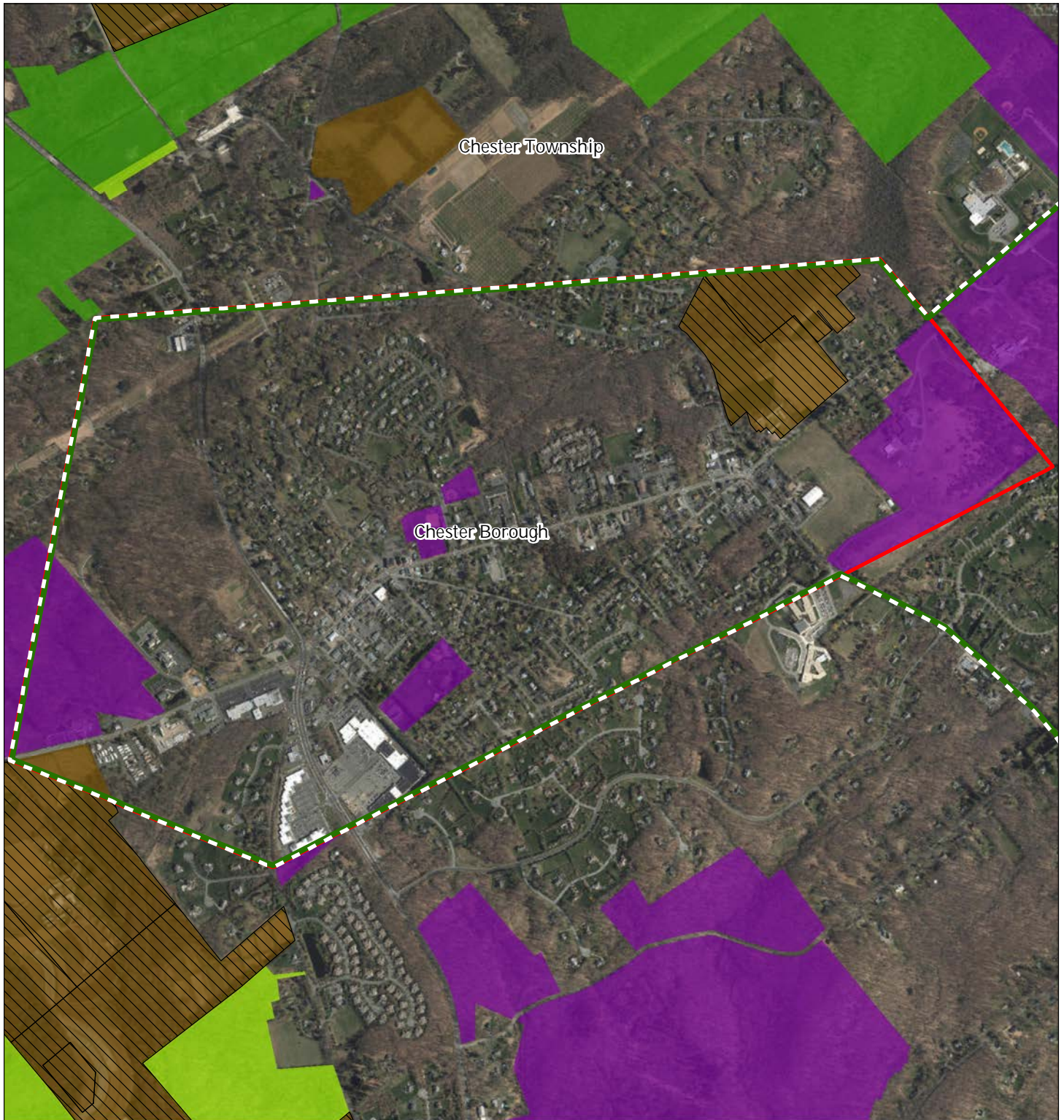
1 inch = 0.261 miles



MAY 2016

BOROUGH OF CHESTER
Highlands Master Plan Element

Exhibit AA: Preserved Lands



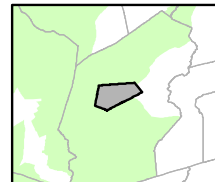
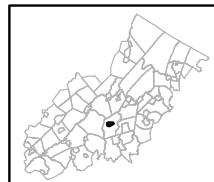
Preserved Lands

- Federal Open Space
- State Open Space
- County Open Space
- Municipal Open Space
- Non-Profit/Private Open Space
- Water Supply Watershed Lands
- Preserved Farmland
- Highlands Transfer of Development Lands

Conservation Easements

- Green Acres
- SADC Final
- SADC Preserved
- Municipal Boundaries
- Preservation Area

Chester Borough

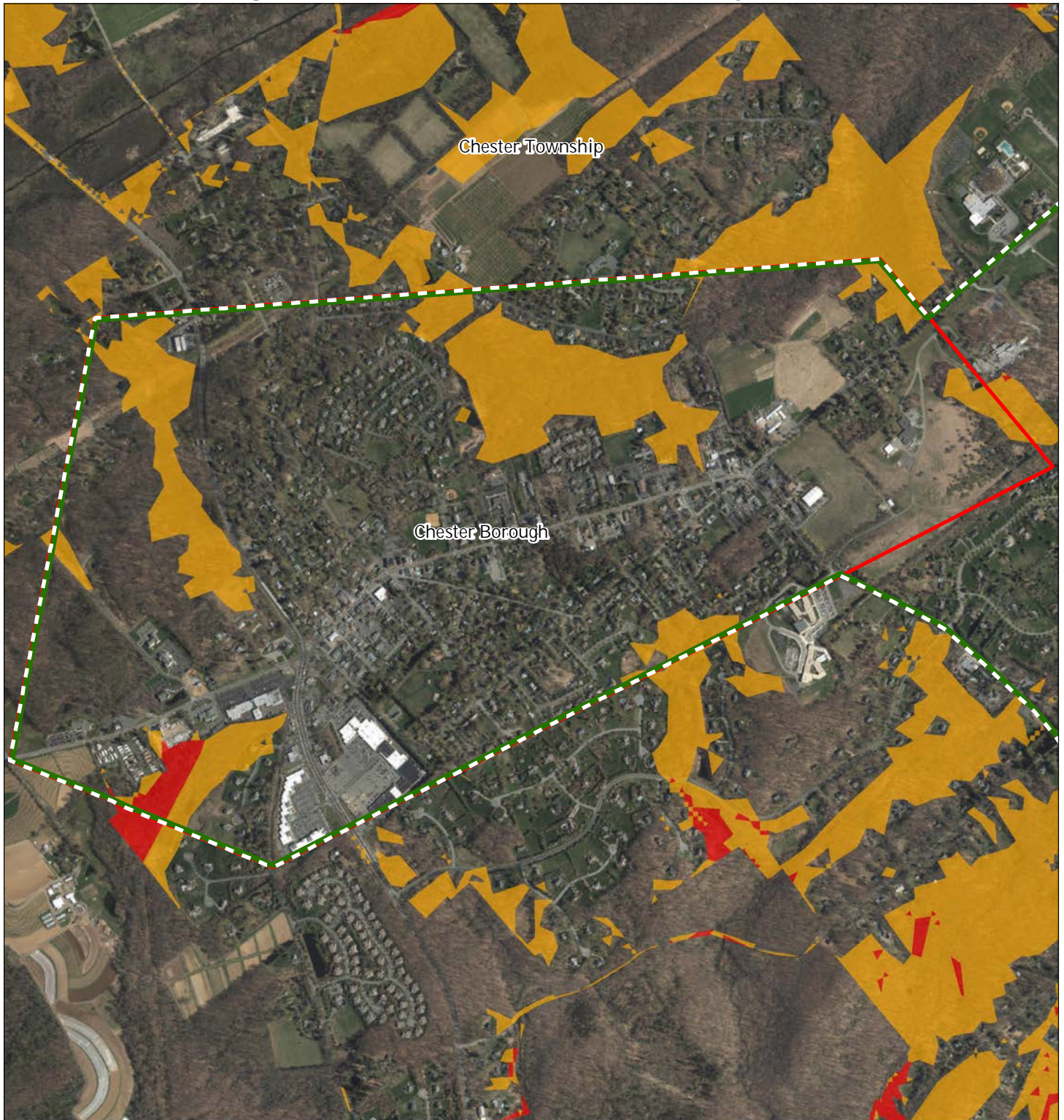


1 inch = 0.261 miles



MAY 2016

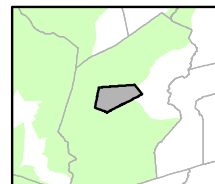
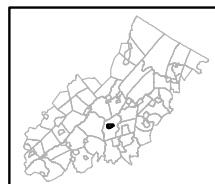
Exhibit BB: Highlands Conservation Priority Areas



Conservation Priority Area

- Moderate*
- High*
- Preservation Area
- Municipal Boundaries

Chester Borough



1 inch = 0.261 miles



MAY 2016

BOROUGH OF CHESTER
Highlands Master Plan Element

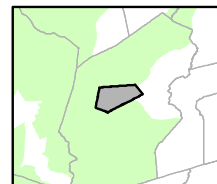
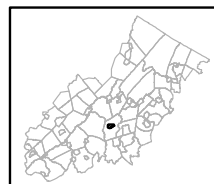
Exhibit DD: Preserved Farms, SADC Easements, All Agricultural Uses



SADC Easements

-  *SADC Final*
-  *SADC Preserved*
-  Preserved Farmland
-  Agriculture Uses
-  Preservation Area
-  Municipal Boundaries

Chester Borough



1 inch = 0.261 miles



MAY 2016

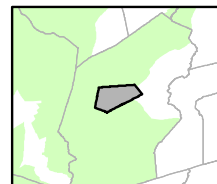
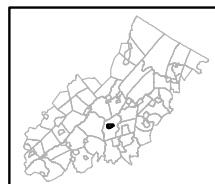
Exhibit EE: Important Farmland Soils



Important Farmland Soils

-  *Prime Farmland*
-  *Farmland of Local Importance*
-  *Farmland of Statewide Importance*
-  *Farmland of Unique Importance*
-  Preservation Area
-  Municipal Boundaries

Chester Borough

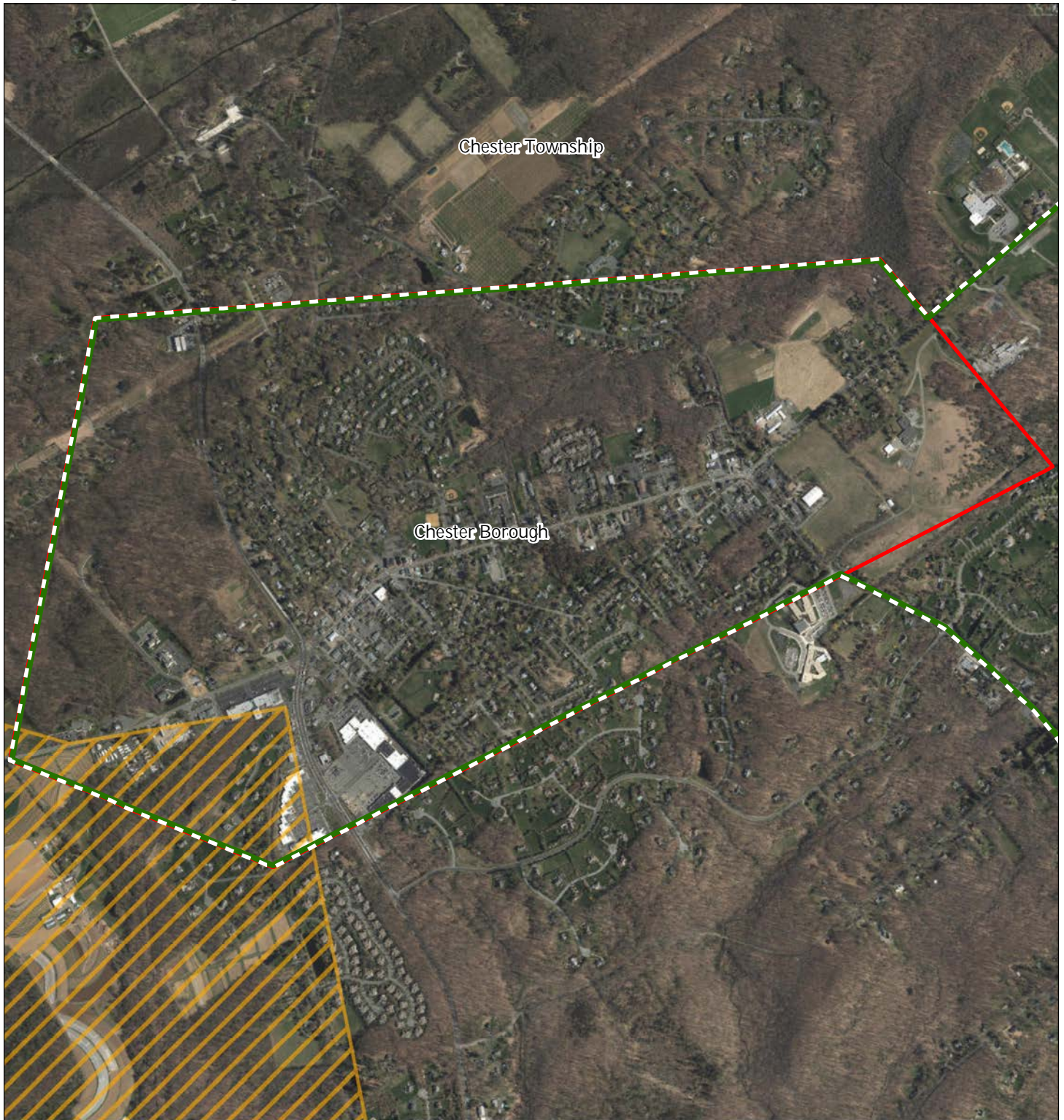





1 inch = 0.261 miles



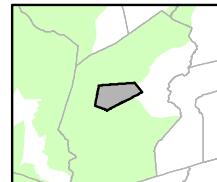
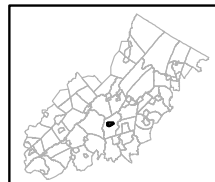
MAY 2016

Exhibit FF: Agricultural Resource Area



-  Agricultural Resource Area
-  Preservation Area
-  Municipal Boundaries

Chester Borough

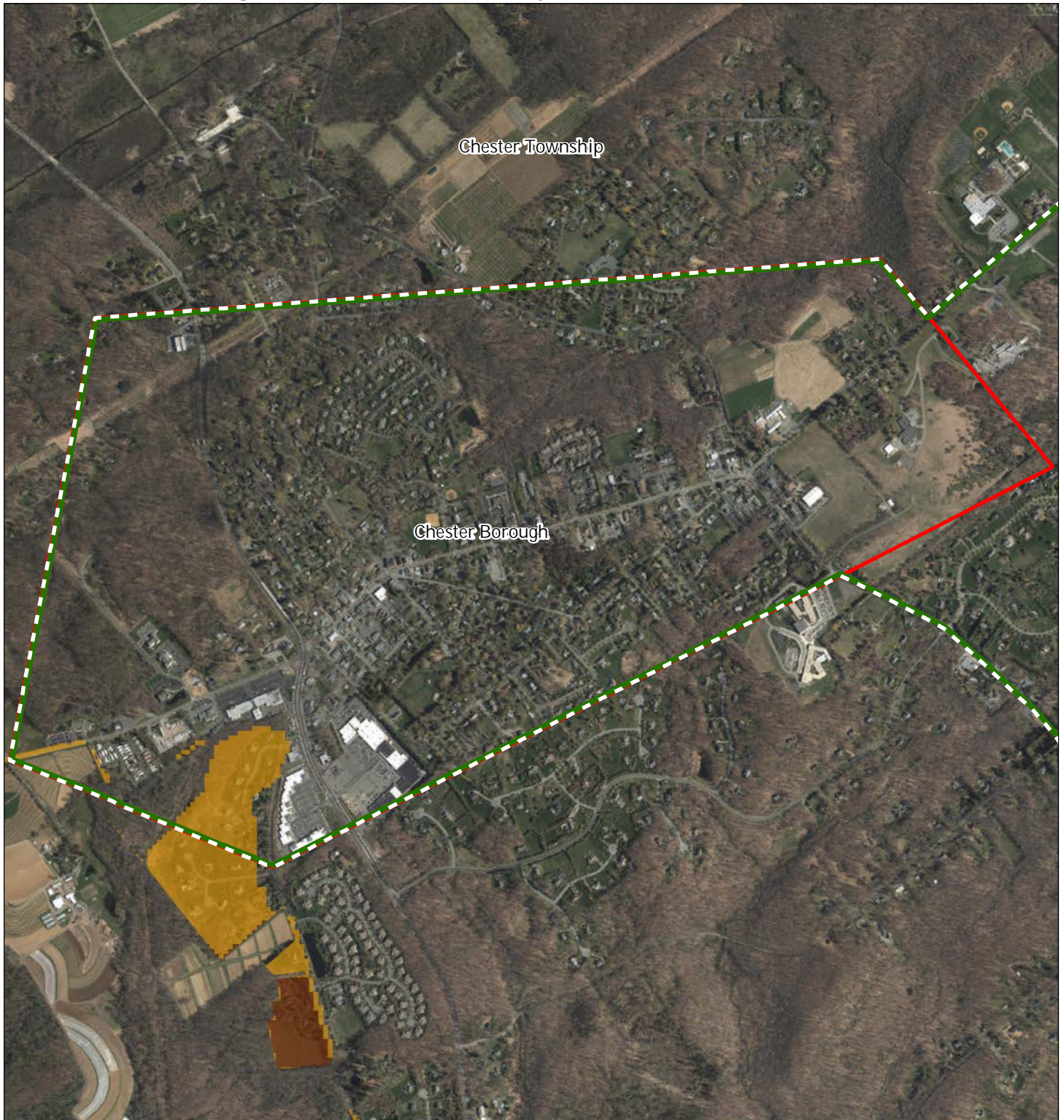


1 inch = 0.261 miles



MAY 2016

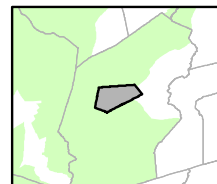
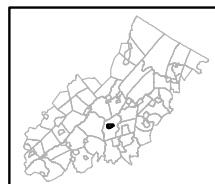
Exhibit GG: Agricultural Priority Area



Agricultural Priority Area

-  *Moderate*
-  *High*
-  Preservation Area
-  Municipal Boundaries

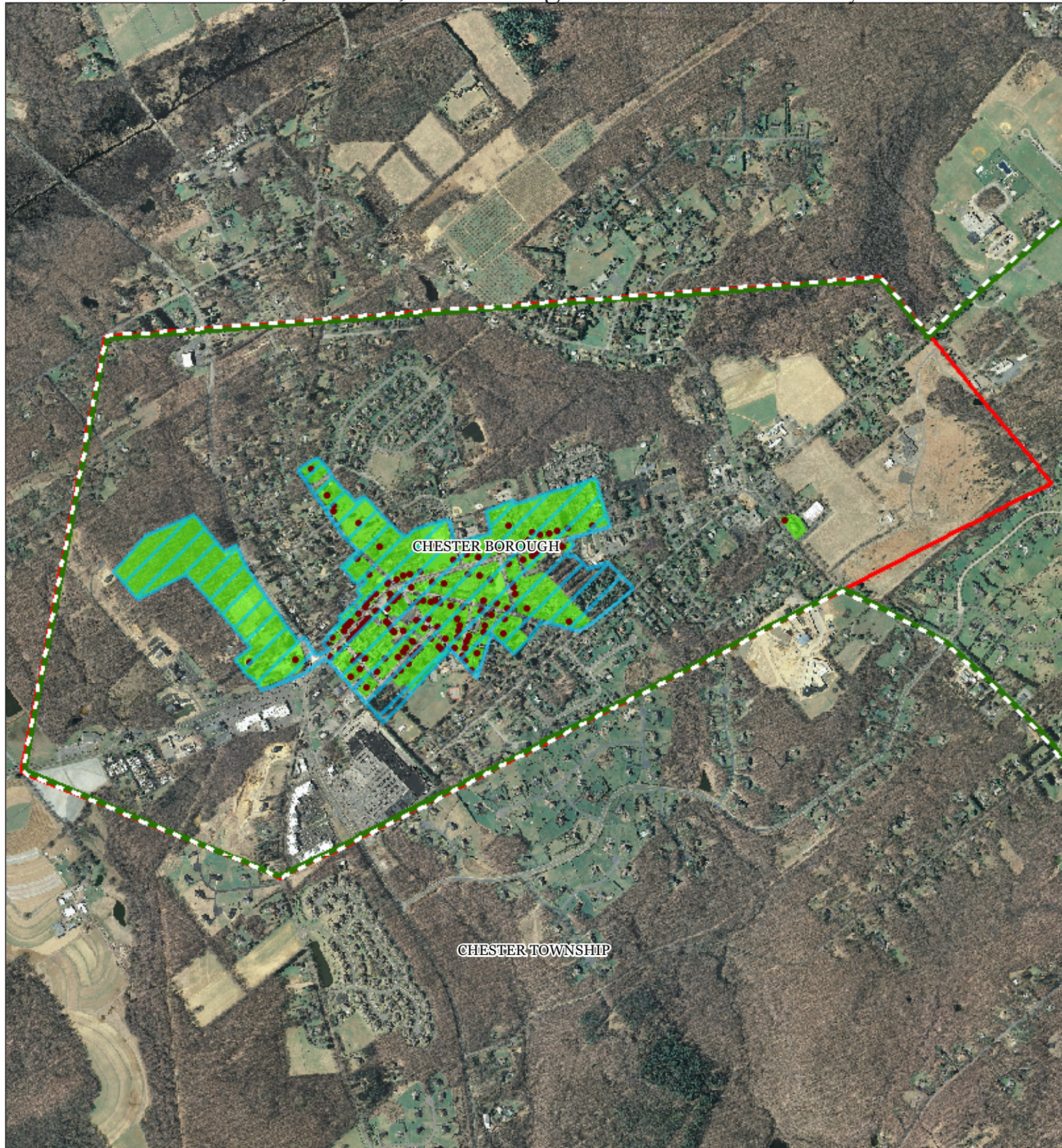
Chester Borough



1 inch = 0.261 miles

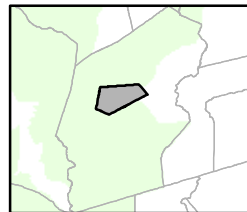
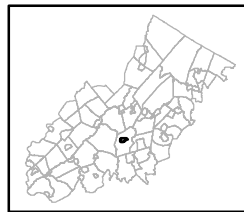


MAY 2016



-  Preservation Area
-  Municipal Boundaries
-  Archaeological Grids (1 sqmi)
-  NJ Historic Districts
-  Historic Property Points
-  Historic Property Polygons

CHESTER BOROUGH

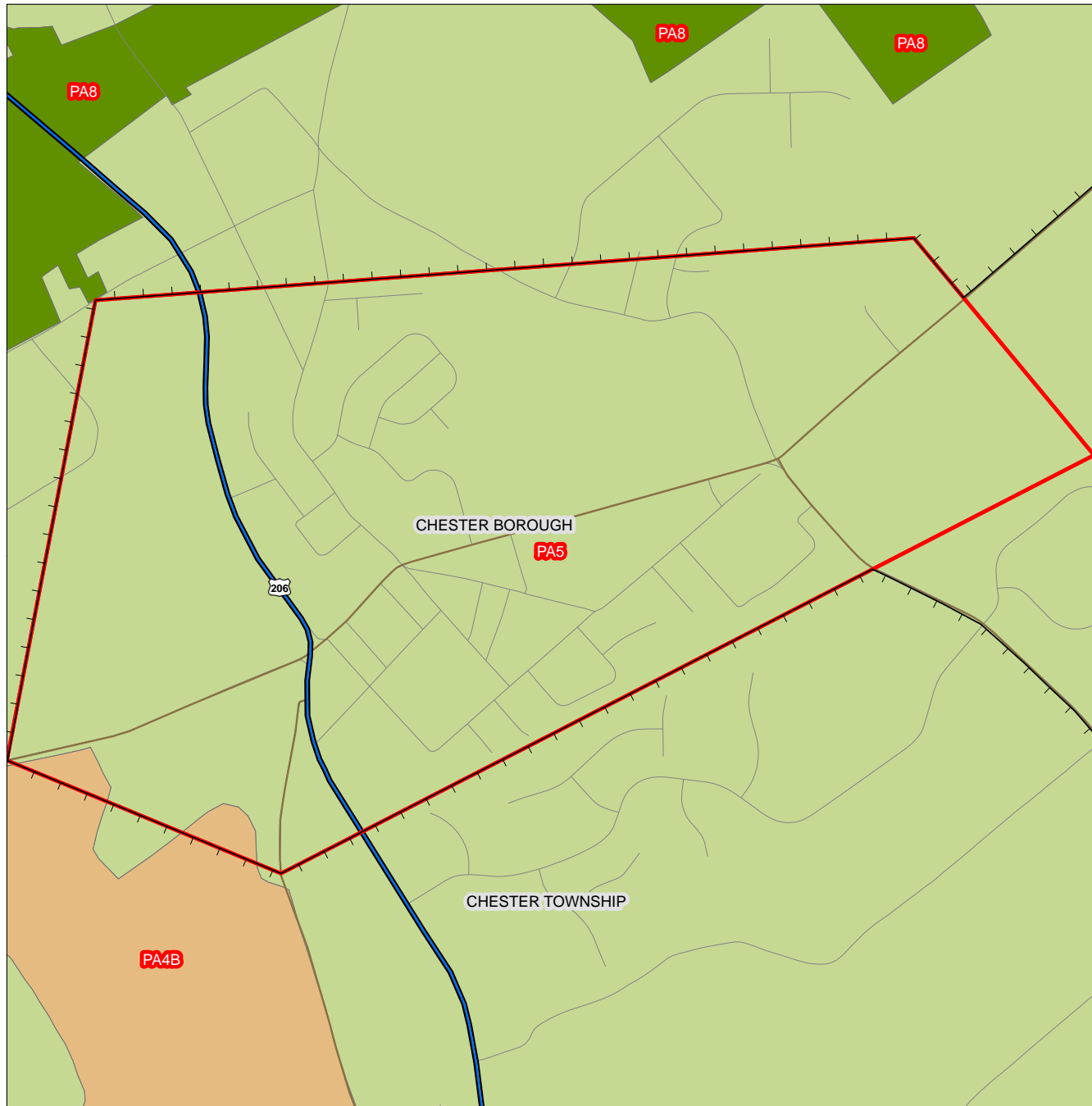


1 inch = 0.266 miles



May 2016

Exhibit JJ: SDRP Planning Areas



Legend



Preservation Area

 Municipal Boundaries

Interstate Highways

U.S. Routes

State Routes

County Routes

X Designated Centers*

State Planning Areas*

METROPOLITAN (PA1)

SUBURBAN (PA2)

FRINGE (PA3)

RURAL (PA4)

RURAL ENVIRONMENTALLY SENSITIVE (PA42)

*

ENVIRONMENTALLY SENSITIVE (PA5)

PARK (PA6)

FEDERAL PARK (PA7)

STATE PARK (PA8)

WATER (PA11)

MILITARY (PA12)

